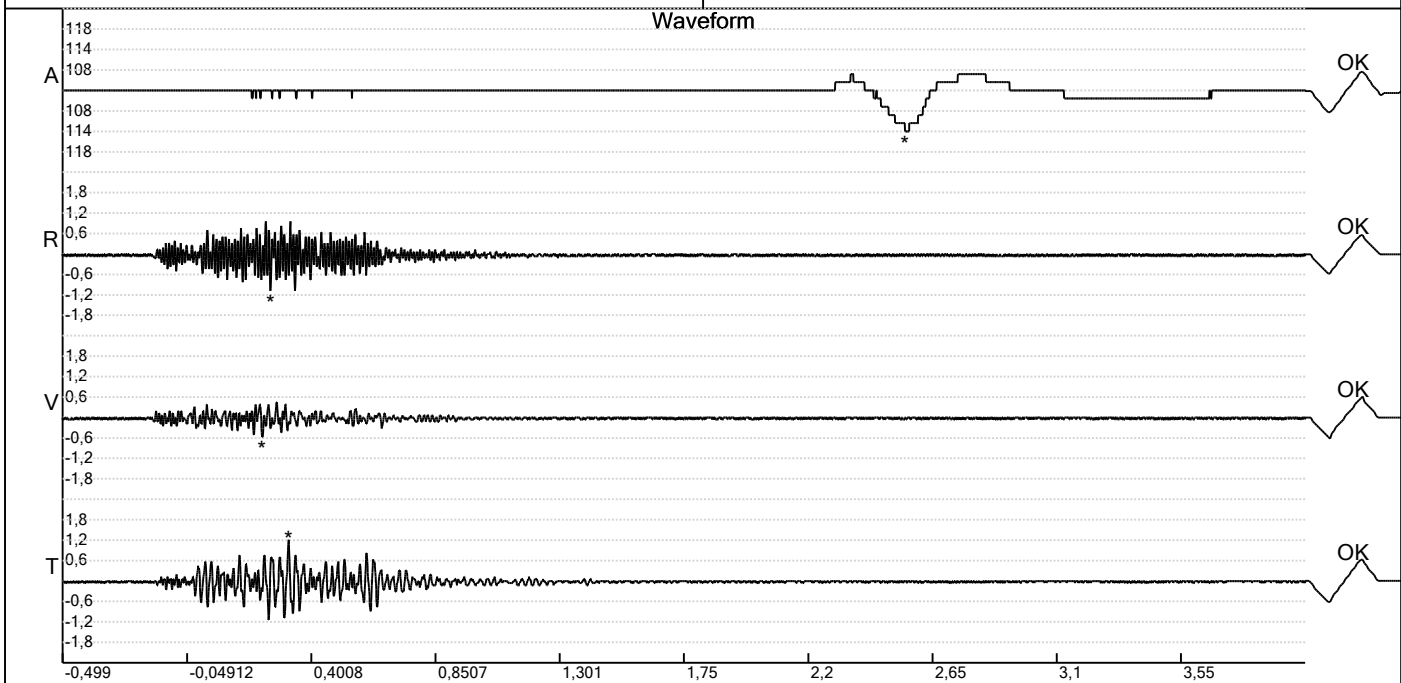


Carrière de BRS
 Oneux -6
 Tir du 25/09/2023
 Sismographe placé au
 261 Halleux
 4710 Comblain-au-Pont

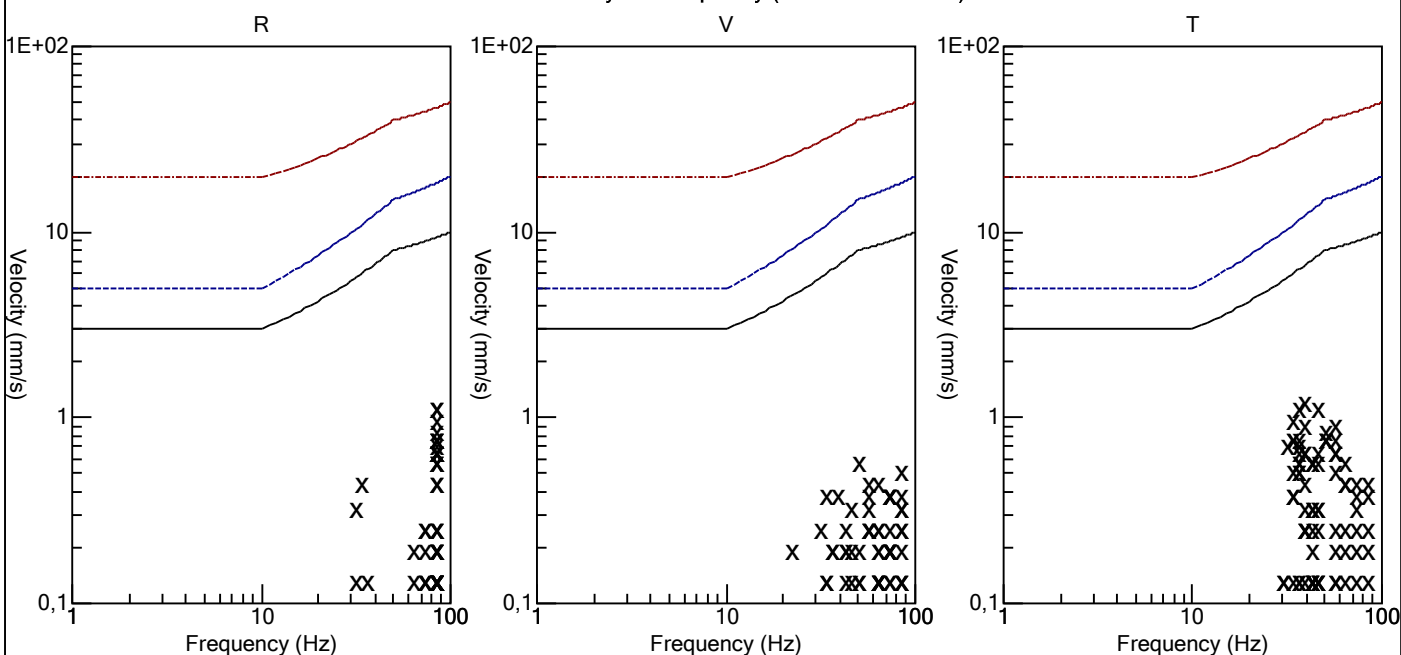
Record: 1789202309251402046.dtb
 Number: 046
 Seismograph: Mini-Seis 1789
 Type of Record: Waveform
 Date: 25-09-23 14:02:00
 Duration: 4,50 Seconds
 Sample Rate: 1024
 Pre-Trigger: 0,5 Seconds
 Seismic Trigger: 0,51 mm/s
 Acoustic Trigger: 142,1 dB
 Seismic Gain: 63,5
 Acoustic Gain: 141,9 dB
 Voltage: 6,4

Peaks and Frequencies
 PPV Maximum (Geo #1): 1,2 mm/s
 Acoustic #1: 114,0 dB @ 2,8 Hz (2,551758 s)
 Radial #1: 1,1 mm/s @ 85,3 Hz (0,2539063 s)
 Vertical #1: 0,57 mm/s @ 51,2 Hz (0,2236328 s)
 Transverse #1: 1,2 mm/s @ 39,3 Hz (0,3193359 s)
 Last Calibration Date: 03-12-21

Graph Information
 Time Range: -0,499 s to 4 s, Intervals: 0,4499 Seconds



Velocity vs. Frequency (DIN 4150-3 Tab 1)

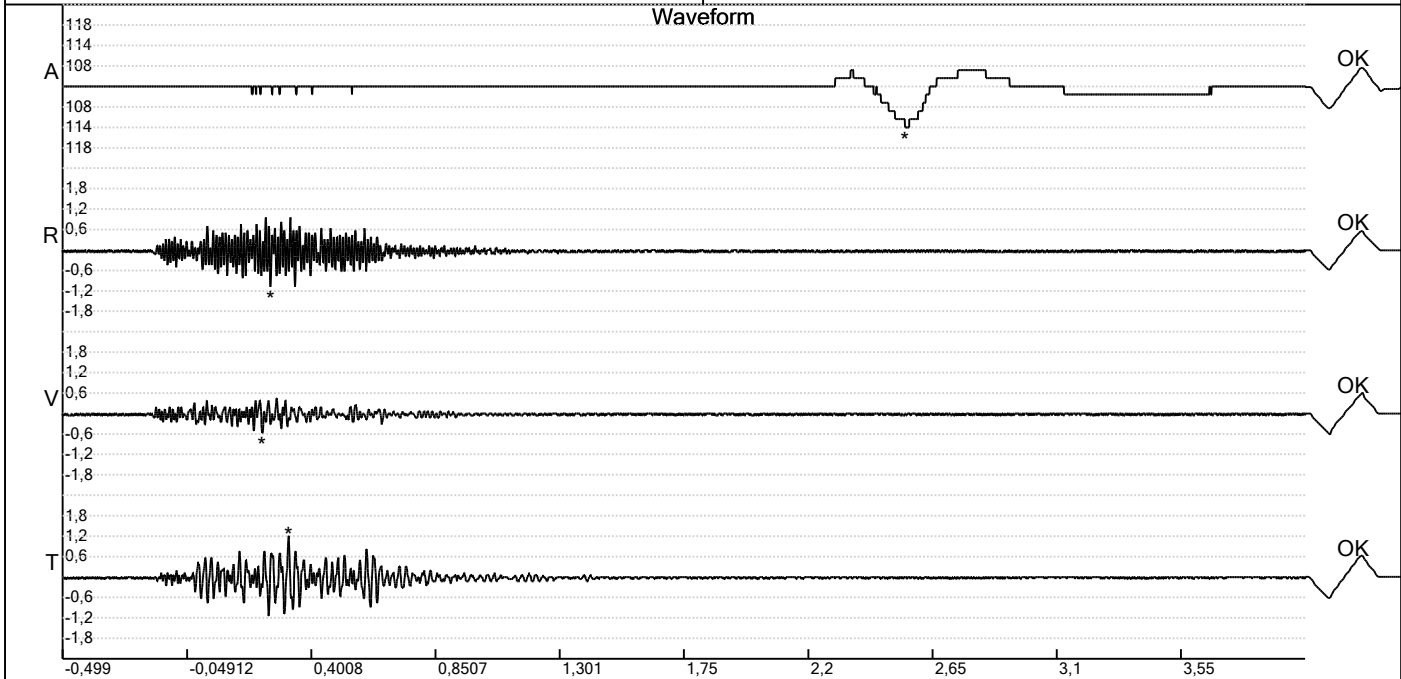


Carrière de BRS
 Oneux -6
 Tir du 25/09/2023
 Sismographe placé au
 261 Halleux
 4710 Comblain-au-Pont

Record: 1789202309251402046.dtb
 Number: 046
 Seismograph: Mini-Seis 1789
 Type of Record: Waveform
 Date: 25-09-23 14:02:00
 Duration: 4,50 Seconds
 Sample Rate: 1024
 Pre-Trigger: 0,5 Seconds
 Seismic Trigger: 0,51 mm/s
 Acoustic Trigger: 142,1 dB
 Seismic Gain: 63,5
 Acoustic Gain: 141,9 dB
 Voltage: 6,4

Peaks and Frequencies
 PPV Maximum (Geo #1): 1,2 mm/s
 Acoustic #1: 114,0 dB @ 2,8 Hz (2,551758 s)
 Radial #1: 1,1 mm/s @ 85,3 Hz (0,2539063 s)
 Vertical #1: 0,57 mm/s @ 51,2 Hz (0,2236328 s)
 Transverse #1: 1,2 mm/s @ 39,3 Hz (0,3193359 s)
 Last Calibration Date: 03-12-21

Graph Information
 Time Range: -0,499 s to 4 s, Intervals: 0,4499 Seconds



Fast Fourier Transform (Amplitude Spectrum)

